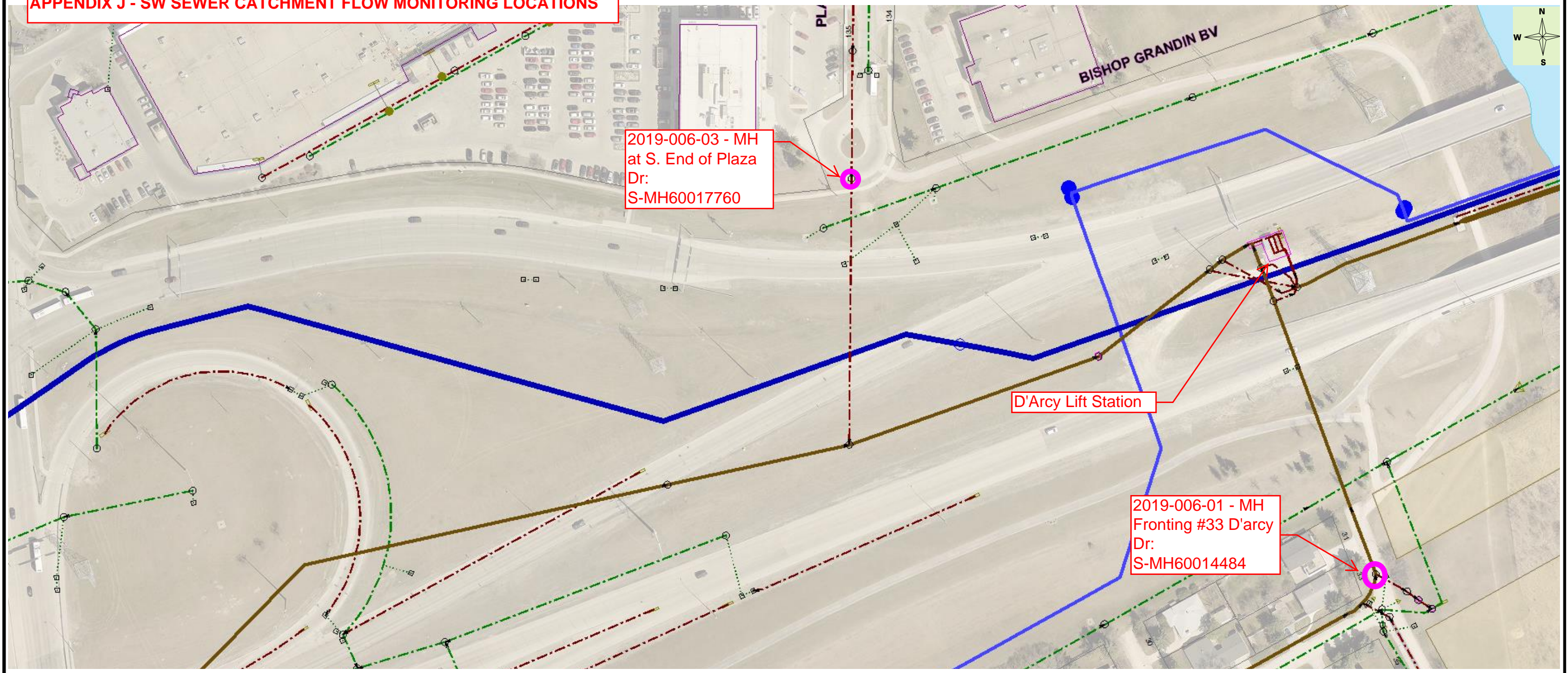


**APPENDIX J - SW SEWER CATCHMENT FLOW MONITORING LOCATIONS**



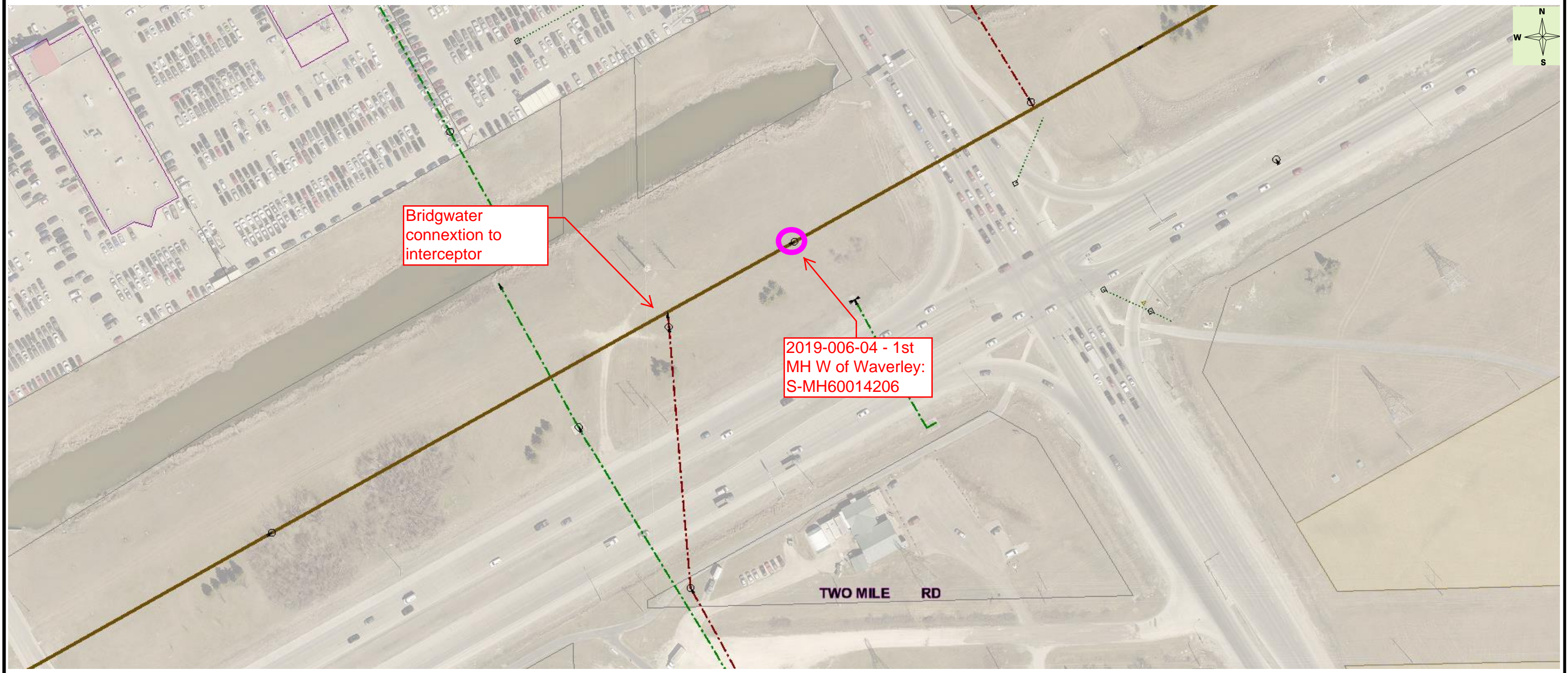
**CAUTION:**  
 This is for information only.  
 There is no guarantee as to the accuracy or completeness of the data.  
 For record drawing information, please contact  
**Underground Structures** at 204-986-6401 or  
 by e-mail at: [ugsinforequest@winnipeg.ca](mailto:ugsinforequest@winnipeg.ca)

WATER			SEWER		
	Hydrant		Watermain		Man Hole
	Valve, LH		Feedermain		Catch Basin
	Valve, RH		Aqueduct		Curb Inlet
	Valve, Air		Anode		Plug
	Curb Stop		Plug		Service Junction
			Service Corp		Combined
					Land Drainage
					Waste Water
					Storm Relief
					Interceptor
					Force Main
					CB Lead



Map Not to Scale



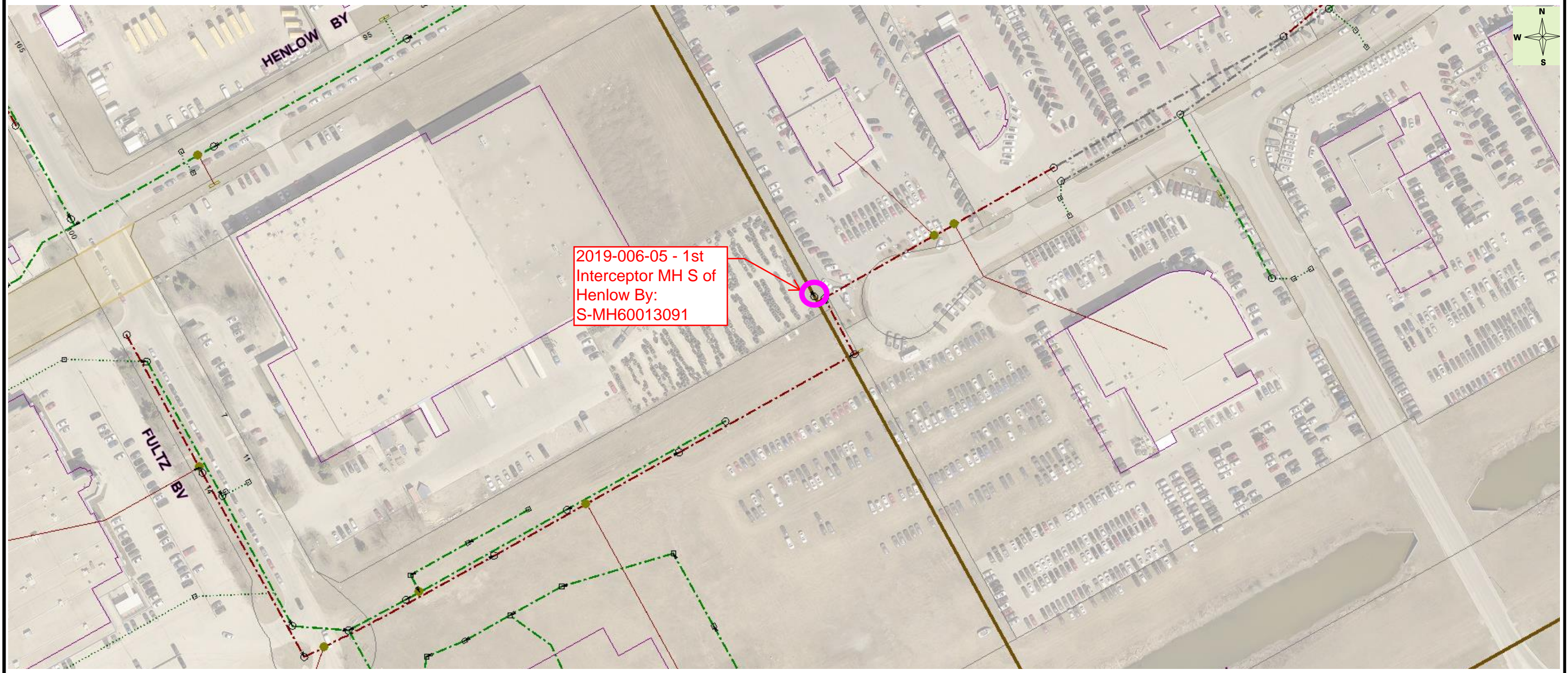


**CAUTION:**  
 This is for information only.  
 There is no guarantee as to the accuracy or completeness of the data.  
 For record drawing information, please contact  
 Underground Structures at 204-986-6401 or  
 by e-mail at: [ugsinforequest@winnipeg.ca](mailto:ugsinforequest@winnipeg.ca)

WATER			SEWER		
	Hydrant		Watermain		Man Hole
	Valve, LH		Feedermain		Catch Basin
	Valve, RH		Aqueduct		Curb Inlet
	Valve, Air		Service Corp		Plug
	Curb Stop		Anode		Service Junction
			Plug		Combined Land Drainage
					Waste Water
					Storm Relief
					Interceptor
					Force Main
					CB Lead

Map Not to Scale





2019-006-05 - 1st  
 Interceptor MH S of  
 Henlow By:  
 S-MH60013091

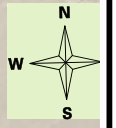
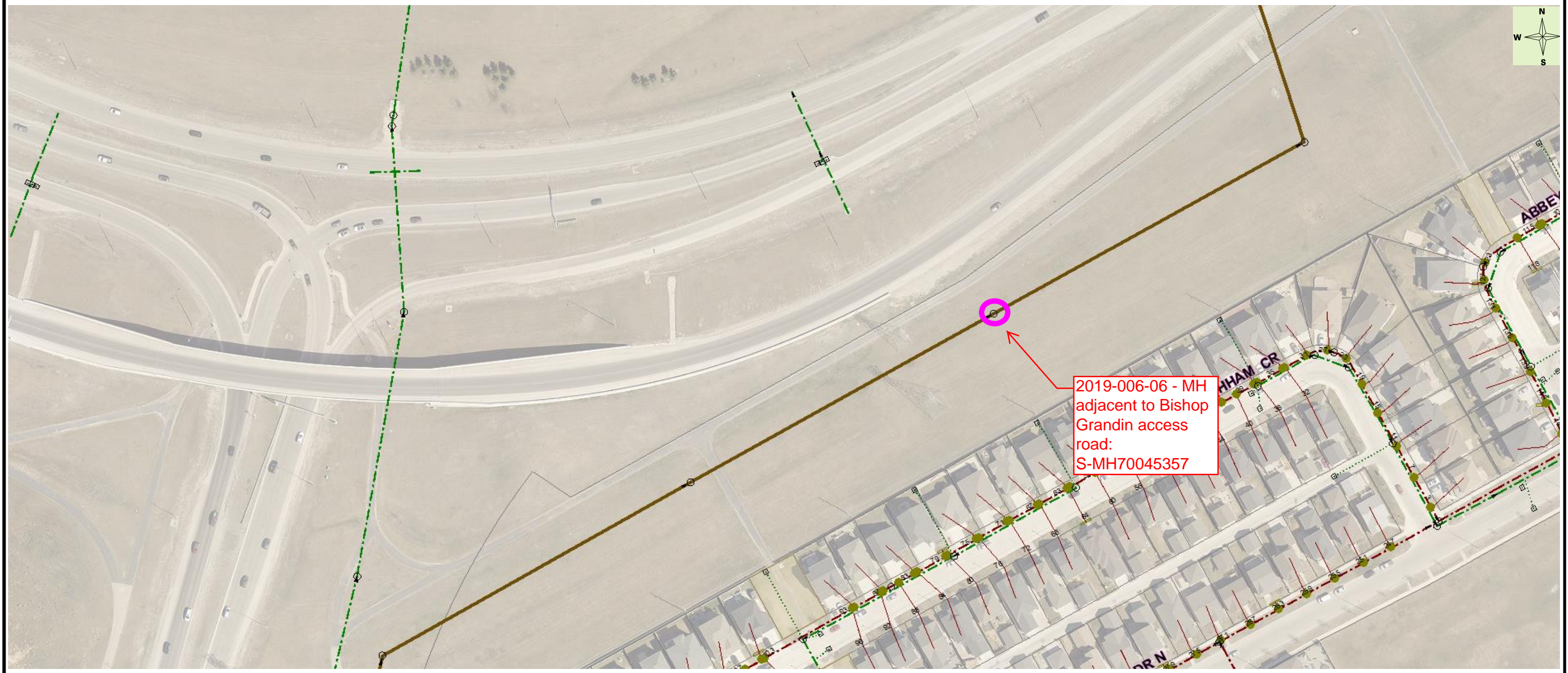


**CAUTION:**  
 This is for information only.  
 There is no guarantee as to the accuracy or  
 completeness of the data.  
 For record drawing information, please contact  
 Underground Structures at 204-986-6401 or  
 by e-mail at: [ugsinforequest@winnipeg.ca](mailto:ugsinforequest@winnipeg.ca)

WATER		SEWER	
Hydrant	Anode	Man Hole	Combined Land Drainage
Valve, LH	Plug	Catch Basin	Waste Water
Valve, RH	Service Corp	Curb Inlet	Storm Relief
Valve, Air	Watermain	Plug	Interceptor
Curb Stop	Feedermain	Service Junction	Force Main
	Aqueduct		CB Lead

Map Not to Scale





2019-006-06 - MH  
adjacent to Bishop  
Grandin access  
road:  
S-MH70045357

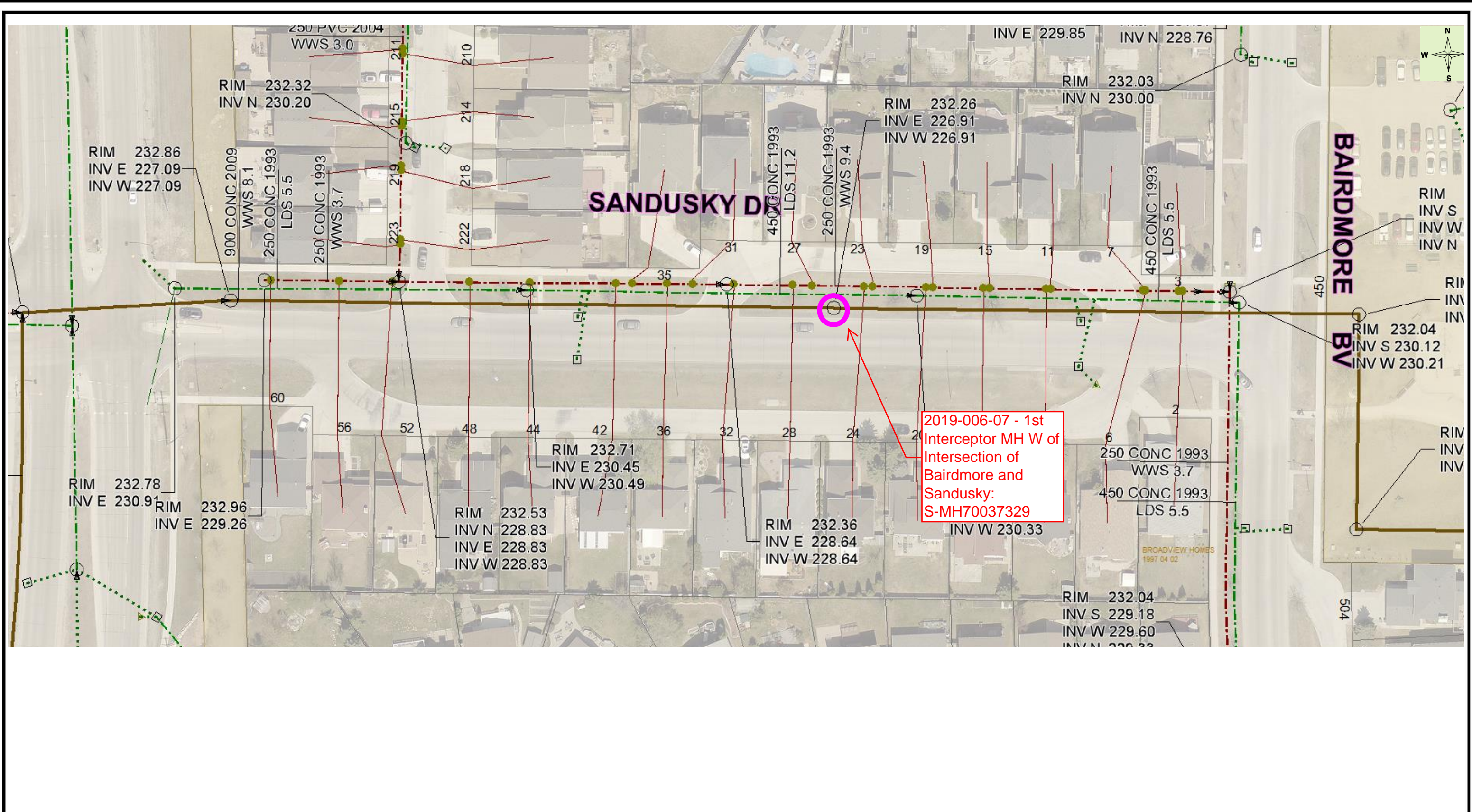


**CAUTION:**  
This is for information only.  
There is no guarantee as to the accuracy or  
completeness of the data.  
For record drawing information, please contact  
Underground Structures at 204-986-6401 or  
by e-mail at: [ugsinforequest@winnipeg.ca](mailto:ugsinforequest@winnipeg.ca)

WATER			SEWER		
	Hydrant		Watermain		Man Hole
	Valve, LH		Feedermain		Catch Basin
	Valve, RH		Aqueduct		Curb Inlet
	Valve, Air		Service Corp		Plug
	Curb Stop				Service Junction
	Anode		Combined Land Drainage		Waste Water
	Plug		Storm Relief		Interceptor
			Force Main		CB Lead

Map Not to Scale





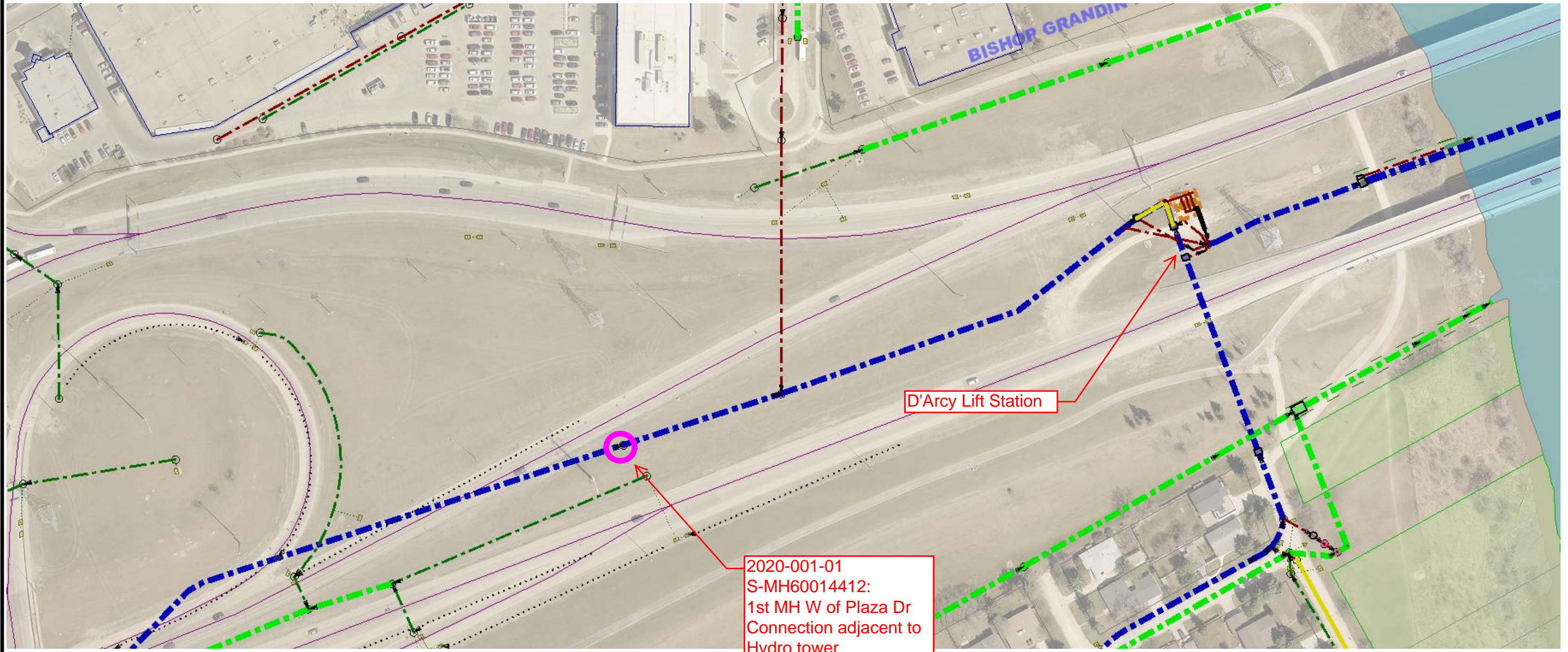
**CAUTION:**  
 This is for information only.  
 There is no guarantee as to the accuracy or completeness of the data.  
 For record drawing information, please contact  
**Underground Structures at 204-986-6401 or**  
**by e-mail at: [ugsinforequest@winnipeg.ca](mailto:ugsinforequest@winnipeg.ca)**

- | WATER      |              | SEWER            |               |
|------------|--------------|------------------|---------------|
| Hydrant    | Anode        | Man Hole         | Combined      |
| Valve, LH  | Plug         | Catch Basin      | Land Drainage |
| Valve, RH  | Service Corp | Curb Inlet       | Waste Water   |
| Valve, Air | Watermain    | Plug             | Storm Relief  |
| Curb Stop  | Feedermain   | Service Junction | Interceptor   |
|            | Aqueduct     |                  | Force Main    |
|            |              |                  | CB Lead       |

Map Not to Scale







2020-001-01  
S-MH60014412:  
1st MH W of Plaza Dr  
Connection adjacent to  
Hydro tower

D'Arcy Lift Station

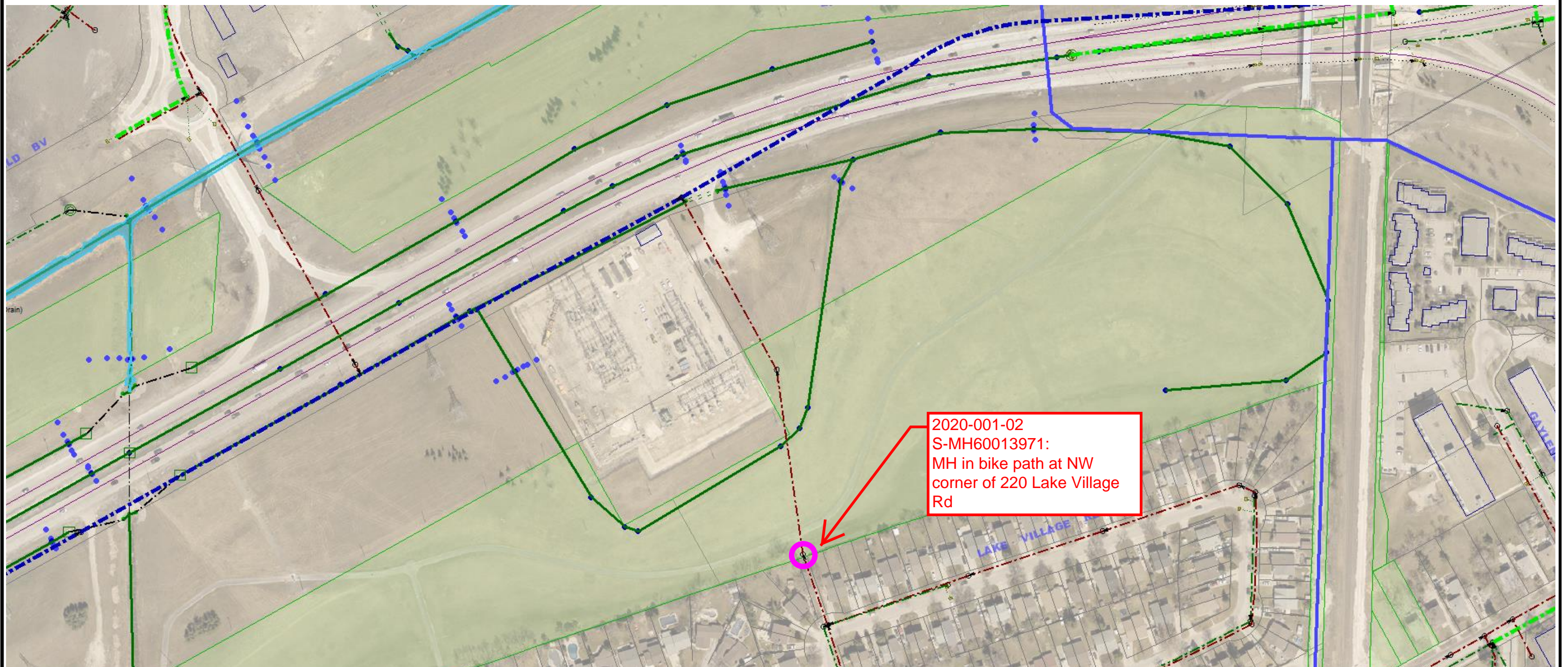


**CAUTION:**  
This is for information only.  
There is no guarantee as to the accuracy or  
completeness of the data.  
For record drawing information, please contact  
**Underground Structures** at 204-986-6401 or  
by e-mail at: [ugsinforequest@winnipeg.ca](mailto:ugsinforequest@winnipeg.ca)

WATER		SEWER	
Hydrant	Anode	Man Hole	Combined
Valve, LH	Plug	Catch Basin	Land Drainage
Valve, RH	Service Corp	Curb Inlet	Waste Water
Valve, Air	Watermain	Plug	Storm Relief
Curb Stop	Feedermain	Service Junction	Interceptor
	Aqueduct		Force Main
			CB Lead

Map Not to Scale





2020-001-02  
 S-MH60013971:  
 MH in bike path at NW  
 corner of 220 Lake Village  
 Rd

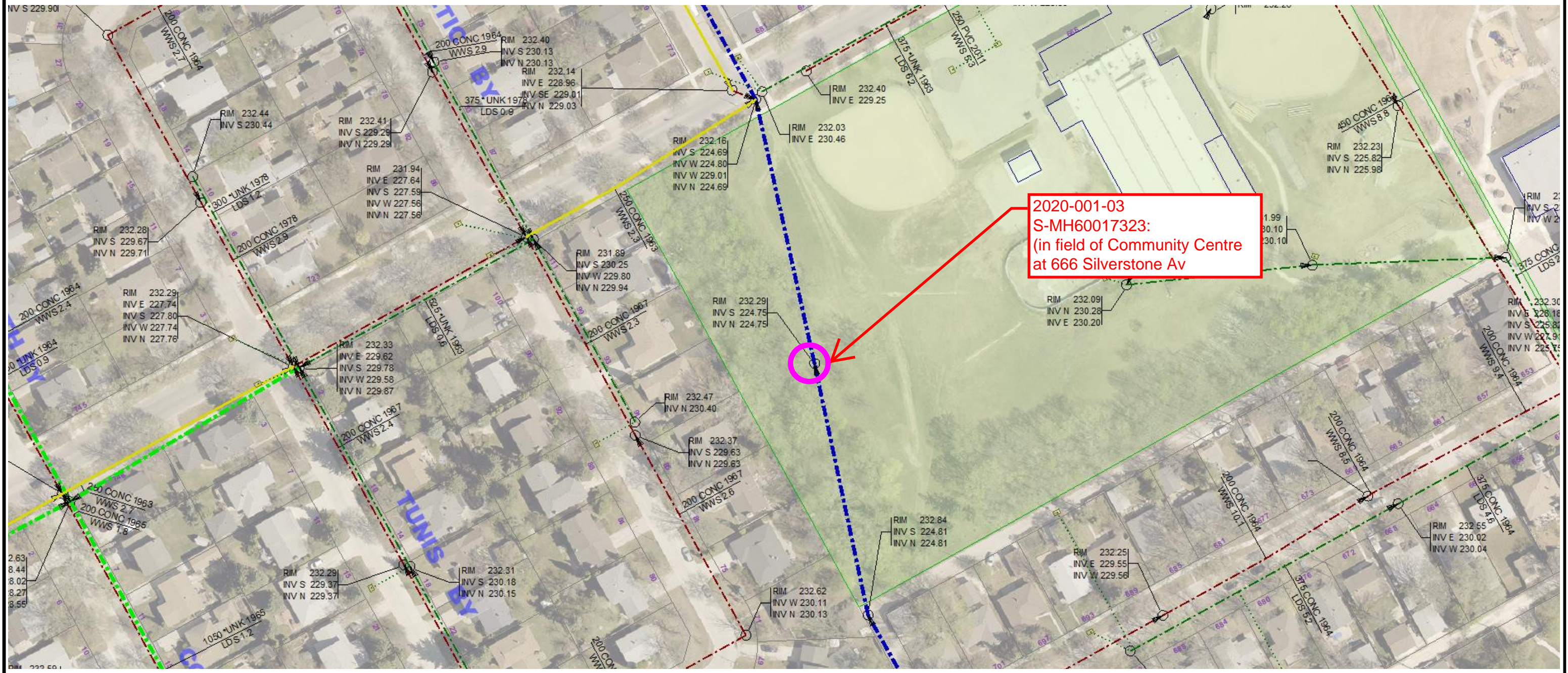


**CAUTION:**  
 This is for information only.  
 There is no guarantee as to the accuracy or  
 completeness of the data.  
 For record drawing information, please contact  
 Underground Structures at 204-986-6401 or  
 by e-mail at: [ugsinforequest@winnipeg.ca](mailto:ugsinforequest@winnipeg.ca)

WATER		SEWER	
Hydrant	Anode	Man Hole	Combined
Valve, LH	Plug	Catch Basin	Land Drainage
Valve, RH	Service Corp	Curb Inlet	Waste Water
Valve, Air	Watermain	Plug	Storm Relief
Curb Stop	Feedermain	Service Junction	Interceptor
	Aqueduct		Force Main
			CB Lead

Map Not to Scale





2020-001-03  
 S-MH60017323:  
 (in field of Community Centre  
 at 666 Silverstone Av



**CAUTION:**  
 This is for information only.  
 There is no guarantee as to the accuracy or  
 completeness of the data.  
 For record drawing information, please contact  
 Underground Structures at 204-986-6401 or  
 by e-mail at: [ugsinforequest@winnipeg.ca](mailto:ugsinforequest@winnipeg.ca)

WATER		SEWER	
	Hydrant		Man Hole
	Valve, LH		Catch Basin
	Valve, RH		Curb Inlet
	Valve, Air		Plug
	Curb Stop		Service Junction
	Anode		Combined
	Plug		Land Drainage
	Service Corp		Waste Water
	Watermain		Storm Relief
	Feedermain		Interceptor
	Aqueduct		Force Main
			CB Lead

Map Not to Scale